

2024  
2025

# EDUCATION PLAN & REPORT



**GEORGE FREEMAN SCHOOL**

# Message from our Principal

## George Freeman School

George Freeman School is committed to the students, staff, parents, and greater community that we serve.

With everything we do; our focus is on making George Freeman School the best place for our students to learn. We are privileged to work closely with our stakeholders to collaboratively build and enhance our school community. This Assurance Report outlines our three-year education plan for the 2024/2025, 2025/2026, and 2026/2027 school years, a roadmap driven by a commitment to excellence and continuous improvement.

We continue to strive for excellence in all areas of our school and look forward to the great things our students will accomplish this school year.



Stefan Dykema  
Principal



# Overview

George Freeman School is a Kindergarten to Grade 9 school that is part of the Golden Hills School Division.

George Freeman School is a Kindergarten to Grade 9 school that has a current student population near 500 students. Our current programs include two classes of every grade. Kindergarten students can choose from full or part-time programming. We have a Physical Education program taught by a PE specialist. Our Kindergarten to grade 5 classrooms are taught by elementary generalist teachers while grades 6, 7, 8, and 9 are taught by subject specialists. Many of our teachers implement a collaborative team-teaching model. Our school is fortunate to be able to offer several Academies for students to explore their interests and develop skills in the areas of soccer, baseball, fastball, and music (piano).

The school education plan for the three years commencing September 3, 2024, was prepared under the direction of the Board of Trustees in accordance with the responsibilities under the Education Act and the Fiscal Planning and Transparency Act.

This plan was developed in the context of the provincial government's business and fiscal plans. We use performance results to develop the plan and are committed to implementing the strategies contained within the plan to improve student learning outcomes.



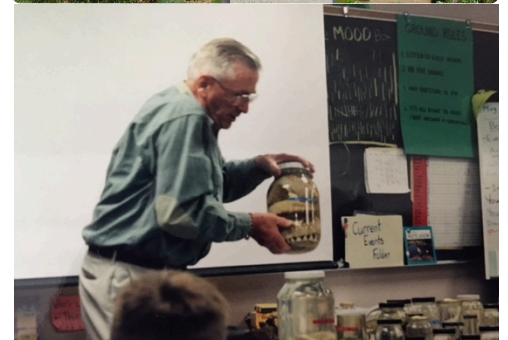
# Who We Are

## Honouring George Freeman's Legacy

Mr. Freeman was born and raised in Strathmore and lived a long, illustrious life here. He was a decorated World War II veteran and spent many years working as a conservationist for Ducks Unlimited. Mr. Freeman was a lifelong volunteer and connected to the community in various ways. When the family of George Freeman was approached about honouring their father with the name of our school, they were overjoyed and very appreciative. As a result, we have a number of artifacts that have been loaned to George Freeman School that tell a bit of the life story of Mr. Freeman. GFS commissioned a local cabinet maker to create some creative display pillars for us to display these artifacts of Mr. Freeman's life. Each display pillar follows one of our ideological pillars listed above.

We are proud to consider our school to be a continuation of the work that Mr. Freeman dedicated his life to. The GHSD powerful learning model continues to be a driving force in the development of teachers who work together with their students to form and create powerful learning opportunities in their classrooms. At George Freeman School, we intend to fulfill those expectations with a variety of student learning opportunities for all grades.

Our school motto is "*Building Everyday Heroes*" and we are incredibly proud to honour Mr. Freeman and his legacy every day.



# George Freeman School Pillars

In each grade, students are mentored to act in ways that display good character, improve the world around them, and be as healthy as possible.

1

## ACTION IN CHARACTER

In cultivating Action in Character, we emphasize the values of acceptance, teamwork, and the unwavering commitment of students to giving their best effort. Nurturing kindness and fostering resilience and perseverance are fundamental aspects of shaping students who contribute to our scholastic community.

---

2

## ACTION IN LIFE

Action in Life guides students toward embracing opportunities for personal and academic growth. Prioritizing holistic well-being, we emphasize the importance of nutrition, mental health, and active participation in sports and recreation. This comprehensive approach seeks to ensure that each student not only succeeds academically but also thrives in all aspects of life, contributing to the overall wellness of our school community.

---

3

## ACTION IN OUR WORLD

Our school is committed to instilling principles of citizenship and volunteerism. Through active engagement, we aim to have our students meaningfully impact our local and global communities. Environmental stewardship, support for others, and active citizenship opportunities help support our students to be connected and contributing members in our world.

---

# Alberta Education Assurance Measures Overall Summary

| Assurance Domain               | Measure   | George Freeman School |                      |                   | Alberta        |                      |                   |
|--------------------------------|---|-----------------------|----------------------|-------------------|----------------|----------------------|-------------------|
|                                |   | Current Result        | Previous Year Result | Previous 3 Yr Avg | Current Result | Previous Year Result | Previous 3 Yr Avg |
| Student Growth and Achievement | Student Learning Engagement   | 82.9                  | 91.7                 | 90.6              | 83.7           | 84.4                 | 84.8              |
|                                | Citizenship   | 75.4                  | 85.9                 | 88.1              | 79.4           | 80.3                 | 80.9              |
|                                | PAT6: Acceptable  | 64.4                  | 75.0                 | 75.0              | 68.5           | 66.2                 | 66.2              |
|                                | PAT6: Excellence  | 6.8                   | 10.4                 | 10.4              | 19.8           | 18.0                 | 18.0              |
|                                | PAT9: Acceptable  | 66.2                  | 69.4                 | 69.4              | 62.5           | 62.6                 | 62.6              |
|                                | PAT9: Excellence  | 10.2                  | 6.9                  | 6.9               | 15.4           | 15.5                 | 15.5              |
| Teaching & Leading             | Education Quality   | 86.4                  | 93.6                 | 92.7              | 87.6           | 88.1                 | 88.6              |
| Learning Supports              | Welcoming, Caring, Respectful and Safe Learning Environments (WCRSLE) | 80.9                  | 88.9                 | 92.7              | 84.0           | 84.7                 | 85.4              |
|                                | Access to Supports and Services                                       | 72.7                  | 81.5                 | 83.5              | 79.9           | 80.6                 | 81.1              |
| Governance                     | Parental Involvement  | 71.8                  | 83.7                 | 84.9              | 79.5           | 79.1                 | 78.9              |



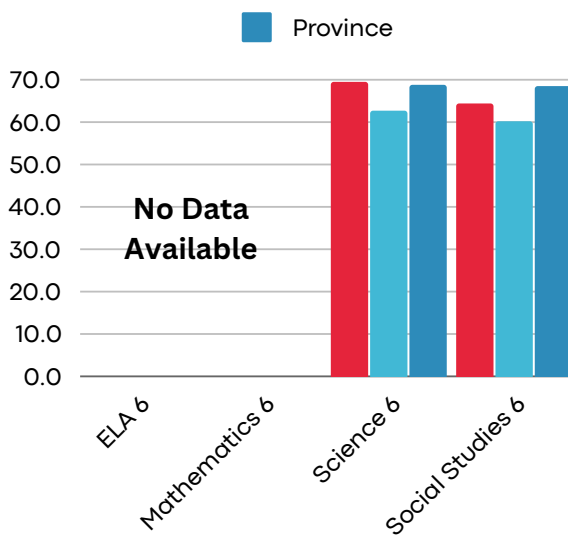
# GFS Provincial Achievement & Supplemental Assurance Data

Provincial Achievement Tests (PATs) are administered annually to all Alberta students in grades 6 and 9. These standardized tests reflect the essentials that all Alberta students are expected to achieve.

## Grade 6 PAT Results

(% Who Achieved the Acceptable Standard)

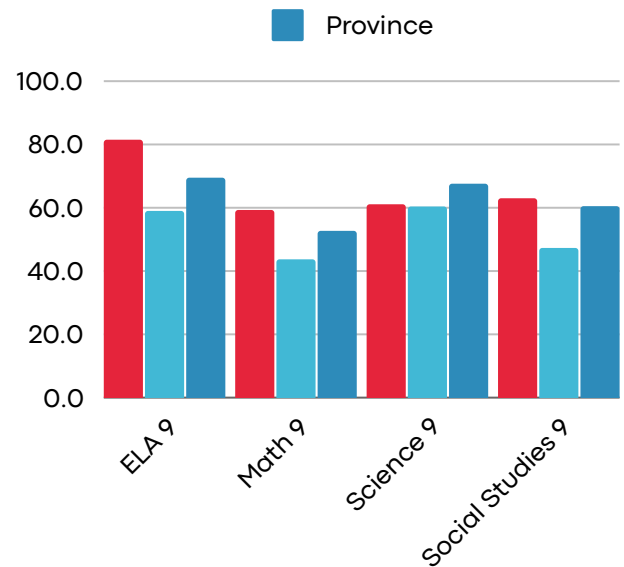
■ School ■ GHSD



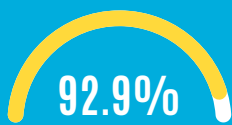
## Grade 9 PAT Results

(% Who Achieved the Acceptable Standard)

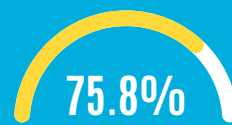
■ School ■ GHSD



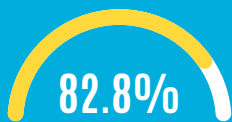
## Assurance Survey Supplemental Data



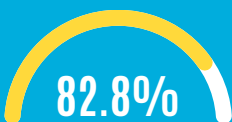
Safe and Caring School



School Improvement



Program of Studies



Work Preparation



# GFS Programs

“What makes a child gifted and talented may not always be good grades at school but a different way of looking at the world and learning”

-Chuck Grassley

## GFS Program

## Program Overview

### Sports Academies

GFS has a tremendous advantage in that the facility that we share with the Town of Strathmore and the County of Wheatland, we have an incredible amount of athletic fields and spaces within our building. We offer baseball, soccer and fastball academies for our students to grow in skill development during the course of the school day. This year we have over 200 athletes registered into at least one of the academies where student participate in at least 16 dedicated sessions.

### Music Academy

Our Music Academy allows an opportunity for our students to learn more about piano and music theory to be a part of our Music Academy. For a nominal fee, students get an individualized 30-minute weekly lesson for 8 weeks with a certified piano instructor. This academy is offered twice per year (fall and spring).

### Athletics

Our school provides the following Athletic Teams for our students:

- o Cross Country
- o Boys Volleyball – 3 teams
- o Girls Volleyball – 3 teams
- o Boys Basketball – 3 teams
- o Girls Basketball – 3 teams
- o Badminton
- o Track and Field
- o Lunch Intramural Program





# GFS Strategic Plan

## Goal 1: Literacy and Numeracy Success for All Learners

### Literacy Scope and Sequence

GFS will initiate a 3-year literacy scope and sequence project. Teachers will work collaboratively to review and align current practices in each grade and across grade levels. This project focuses on identifying and implementing best practices in literacy to best support our students. This program will consist of a holistic review of our current literacy program.



### Numeracy

The main math resource for students in Grades 1 - 5 at GFS is Mathology. Grades 6-9 students use the resource Math Links by McGraw-Hill Education. Alternative resources (ex. JUMP math) are also utilized in some grade levels. GFS will begin a review process to identify numeracy gaps within our student population and then develop a numeracy intervention plan that will focus on differentiation, targeted intervention, and review/implement best practices into our instruction and assessment practices as a staff.

### Learning Support

As a school, we will use all relevant data to identify students requiring additional support. We will continue to offer younger students targeted literacy and numeracy support through Early Literacy Intervention, Early Numeracy Intervention, and Levelled Literacy Intervention programs. Over the next three years, GFS is committed to exploring how to better differentiate and support JH students with unique learning challenges. This includes scaffolding instruction to make the curriculum accessible to all students, teacher collaboration, and Resource Team meetings to strategize how to best support individual students who may have unique challenges. George Freeman School will continue to explore ways to provide direct support to students who have identified learning gaps and enhance and extend the understanding of all students.

# GFS Strategic Plan

## Goal 2: Strengthening Engagement in our School & Deepening Our Roots in Our Community

GFS recognizes that it is important to continue to foster growth by expanding opportunities for students to thrive through meaningful connections, diverse experiences, and a vibrant, ever-evolving school community.

GFS continues to embed our school pillars into our school culture. A teacher committee develops and implements school-wide learning activities based on our school pillars. Students develop a deeper understanding of the pillar and integrate it into their daily lives. These projects are an important part of developing teacher practice to look for natural connections between curriculum while increasing authentic engagement and connecting and contributing with people and issues both inside and outside the school.

### Key Initiatives Include:

- Increasing the number of community connection events. During the 2024-2025 school year this includes our welcome back BBQ, community movie night, a Christmas Festival, community sports night and year-end events in the spring.
- Offering relational and connection driven experiences. Examples Include:
  - Our Victory in Europe Trip where we follow in the footsteps of namesake, George Freeman, during his time in service during World War II.
  - Our Sailing Trip where students learn to navigate and sail a tall ship through the Gulf Islands for five days.
  - Grade 6 Edmonton trip where students learn more of our provincial government and explore the city of Edmonton
- Enhancing access to extracurriculars through initiatives like the Grade 5/6 Cross Country Meet, our partnership with Calvary FC Soccer, and the introduction of E-Sports to provide opportunities for students to deepen their sense of belonging and connection to the school.
- Implementing a new consultation framework with parents to enhance collaboration with parents in the creation of their child's Individual Program Plan, Individual Support Plan or Behavior Support Plan.
- Expanding our commitment to utilizing digital platforms more effectively to connect with parents and the broader community, sharing our story and building stronger relationships with our parent community.



# GFS Strategic Plan

## Goal 3: Increase Education Quality and Effectiveness to Ensure All Students are Successful

As a school, we recognize the importance of teachers and their instructional expertise in shaping successful learning outcomes. Our staff is dedicated to ensuring that all of our students receive the highest quality education possible. As a school-based team, we plan to review, collaborate, and grow in our practice to ensure that all students are successful.

Key Strategies include:

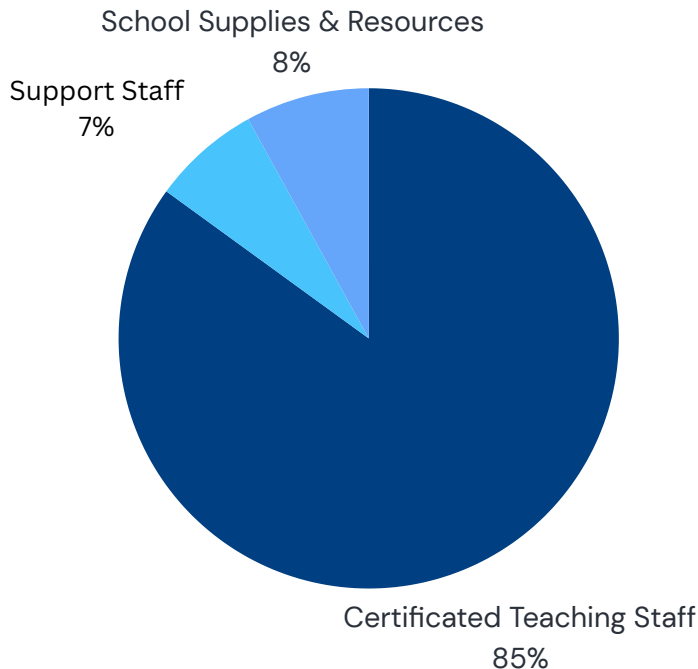
- Develop a school assessment policy that focuses on best practices.
- Embed site-based professional development opportunities that focus on Strategic Instruction
- Promote and support purposeful collaboration in grade-level teams and cross-curricular teams to increase student learning.
- Expand our Leading by Learning Program, where teachers observe master/experienced teachers within our building and the school district.
- Encourage and promote our staff to work with Instructional Coaches and subject matter experts.

Over time our powerful learning plan will foster a deeper sense of connection, increase our professional practice, and ultimately will support the learning experience of our students. We will use a range of data metrics to gauge the success of our plan, including PAT results, Numeracy and Literacy Assessments, and individual student progress.



# Operating Budget and Capital Planning

For the 2024–2025 School Year



>100%

Utilization Rate

3.3 mil

Million Operation  
Budget

40

Staff Members

We are incredibly fortunate to be the staff and students who get to come to school in this wonderful building! With GFS sharing the Strathmore Motor Products Sports Center with the Town of Strathmore, we have some amazing advantages due to our unique building. GFS has made considerable additional investments to enhance the student learning experience. This includes:

- Planting 30 mature trees
- Creating a pollinator garden
- Designing and installing two permanent outdoor classrooms
- Adding additional walking pathways in high-congestion pedestrian areas
- Installing sustainable off-grid electricity and lighting in the storage shed
- Expanding our playground

We continue to work with our School Council to identify and prioritize new projects and look forward to some amazing projects in the near future.

## Utilization and Space Issues

George Freeman School has seen tremendous growth since it first opened and is now at capacity. This has created space challenges and limits our programming options due to the lack of available space. We continue to explore what future capital projects could be available and regularly consult/collaborate with GHSD as we navigate these space challenges.